

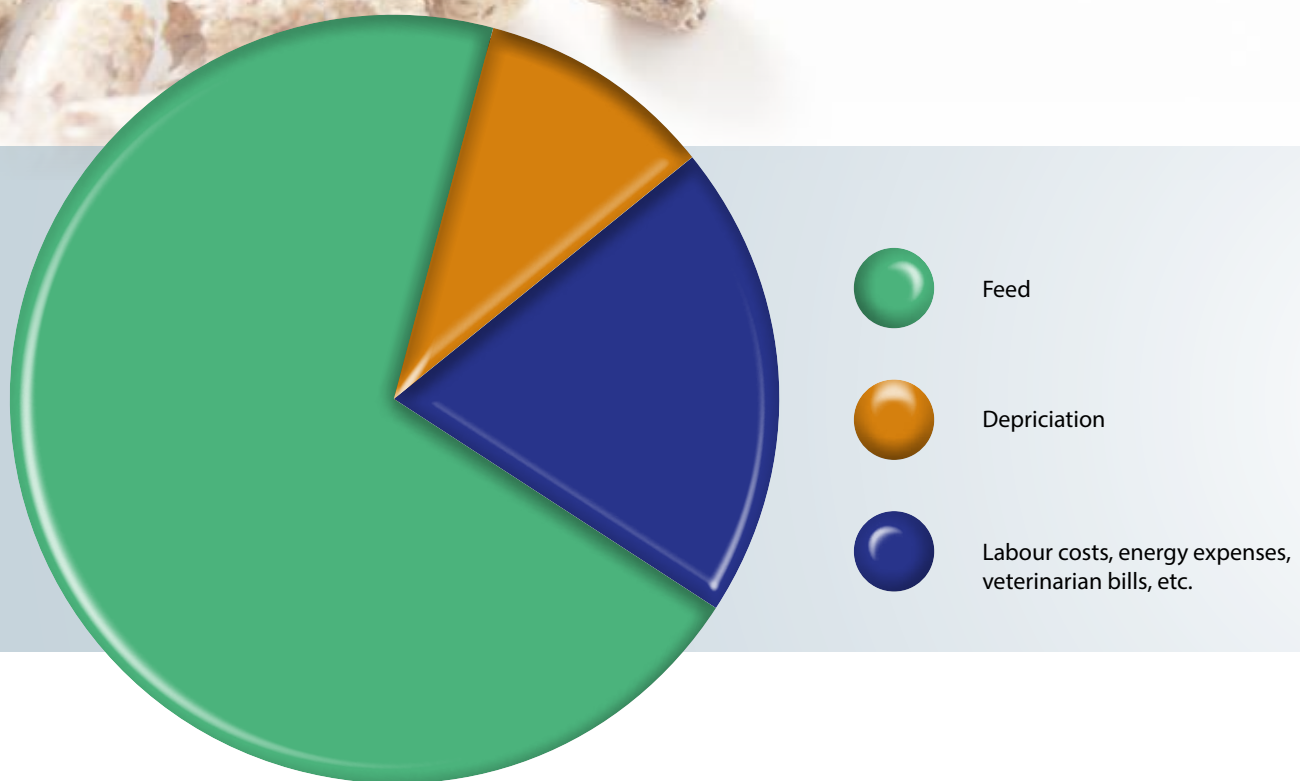


ProGrow[↑]

Taking your pork production to the next level



Climate for Growth



70% feed costs

The key to a good economy in weaner and finisher production is efficient feeding. In finisher production, feed accounts for approx 70% of all costs. If feeding efficiency is improved by 0.1 FUp per kg gain, earnings can be improved by EUR 2 per produced finisher.

Optimal feeding & an improved bottom line...



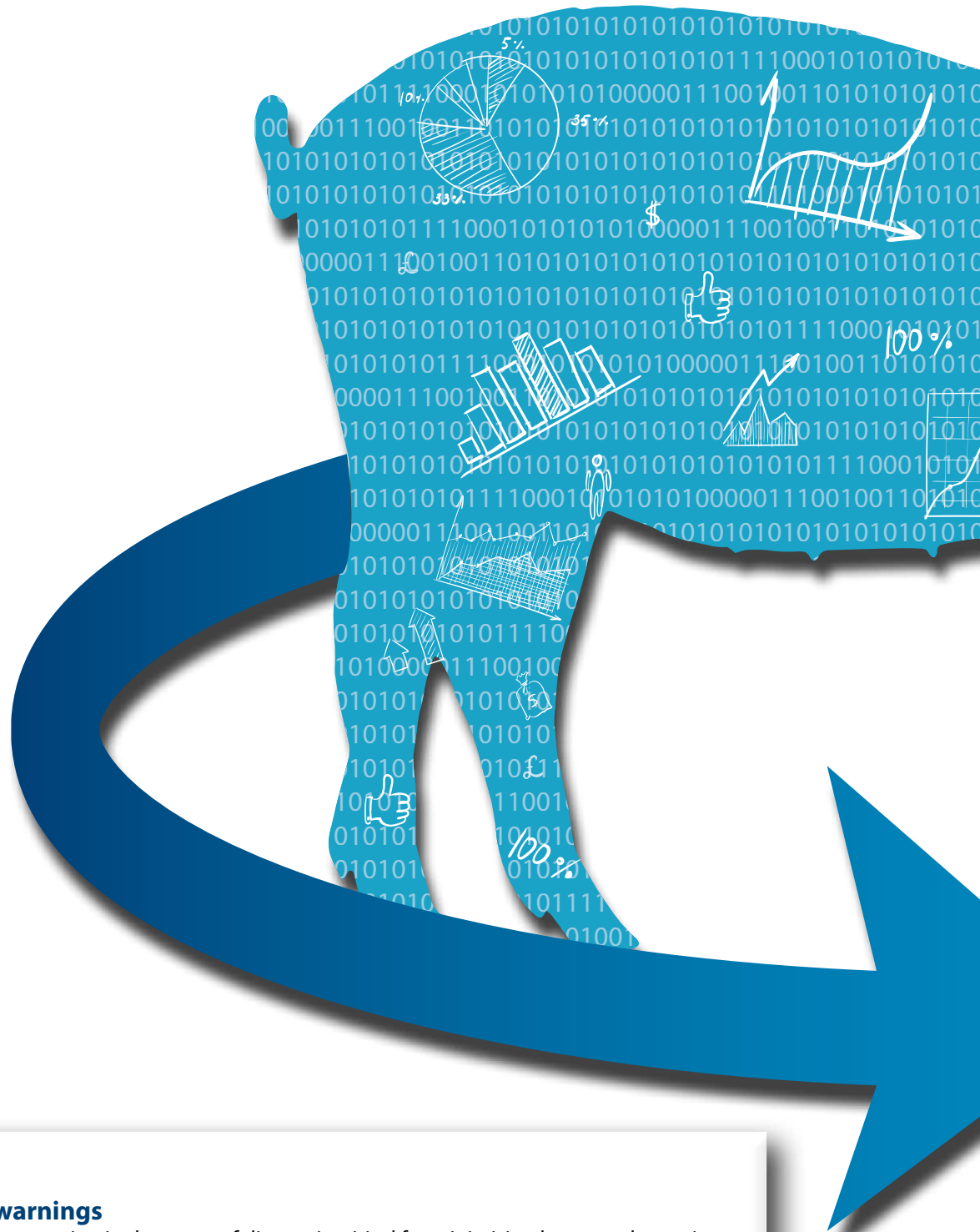
"With production spread out on five sites, it is of great value being able to monitor the pigs' feed and water intake - also when you are not in the livestock house, says Thomas Kjær, owner, Vrejlev Møllegaard and is complemented by his farm manager Ib Filholm Jensen.

- With ProGrow we discovered an error in the feed delivery that we would otherwise never have discovered.

We annually produce 55,000 finishers, and camera weighing will save us much work just as the weighings are more accurate. "

360° overview and easy management

With ProGrow, you get a complete overview of your production, so that you can make decisions based on up-to-date data. The system includes an integrated climate and production computer, which controls ventilation, heating and cooling, controls the dry feeding system with up to five feed mixtures, monitors feed and water consumption and provides the opportunity for registering animals for sales/delivery and removal to recovery pen as well as those that have died. ProGrow also includes a management program, FarmOnline, which offers a complete overview of production.



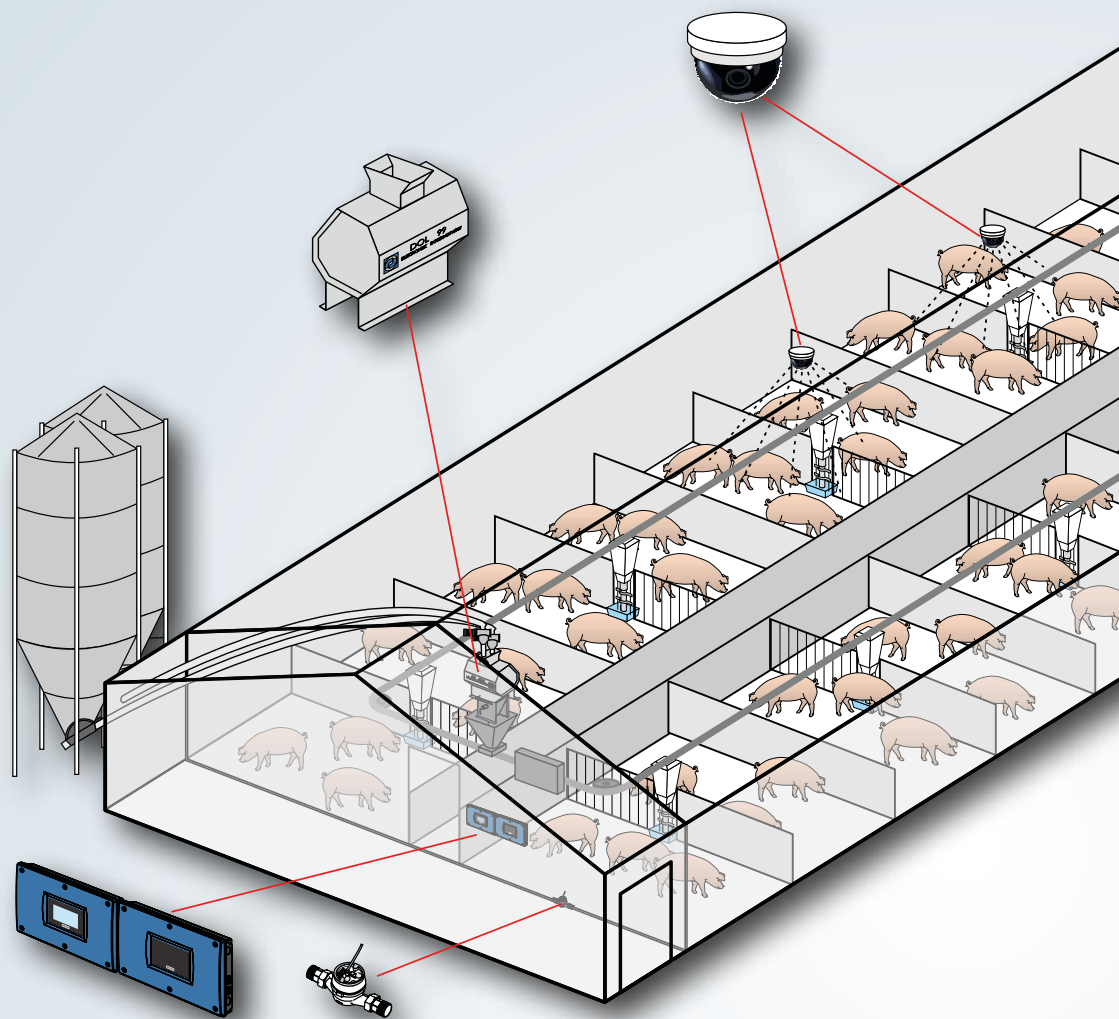
Early warnings

Rapid intervention in the event of disease is critical for minimising losses and ensuring the animals' welfare. Changes in feed and water intake as well as in the pigs' level of activity can indicate that disease may be under way. With ProGrow, you get the help you need to react quickly and treat the pigs before the disease leads to greater losses.



The key to a good economy in weaner and finisher production is high gain with efficient feeding. With camera weighing, you have the opportunity to optimise the feeding strategy, choice of raw materials, number of feed mixtures and the time when you change the feed mixture.

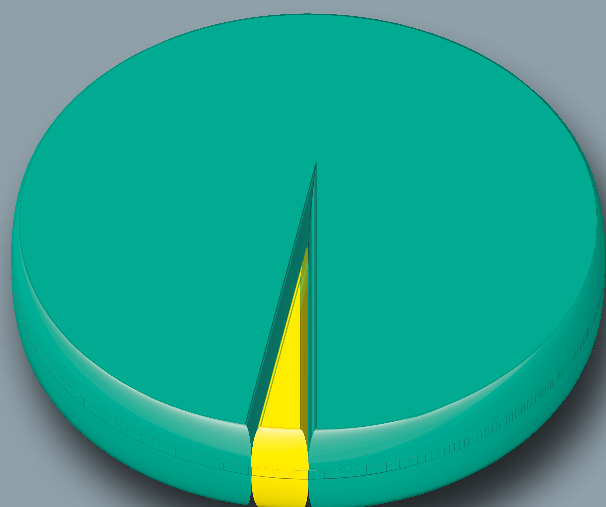
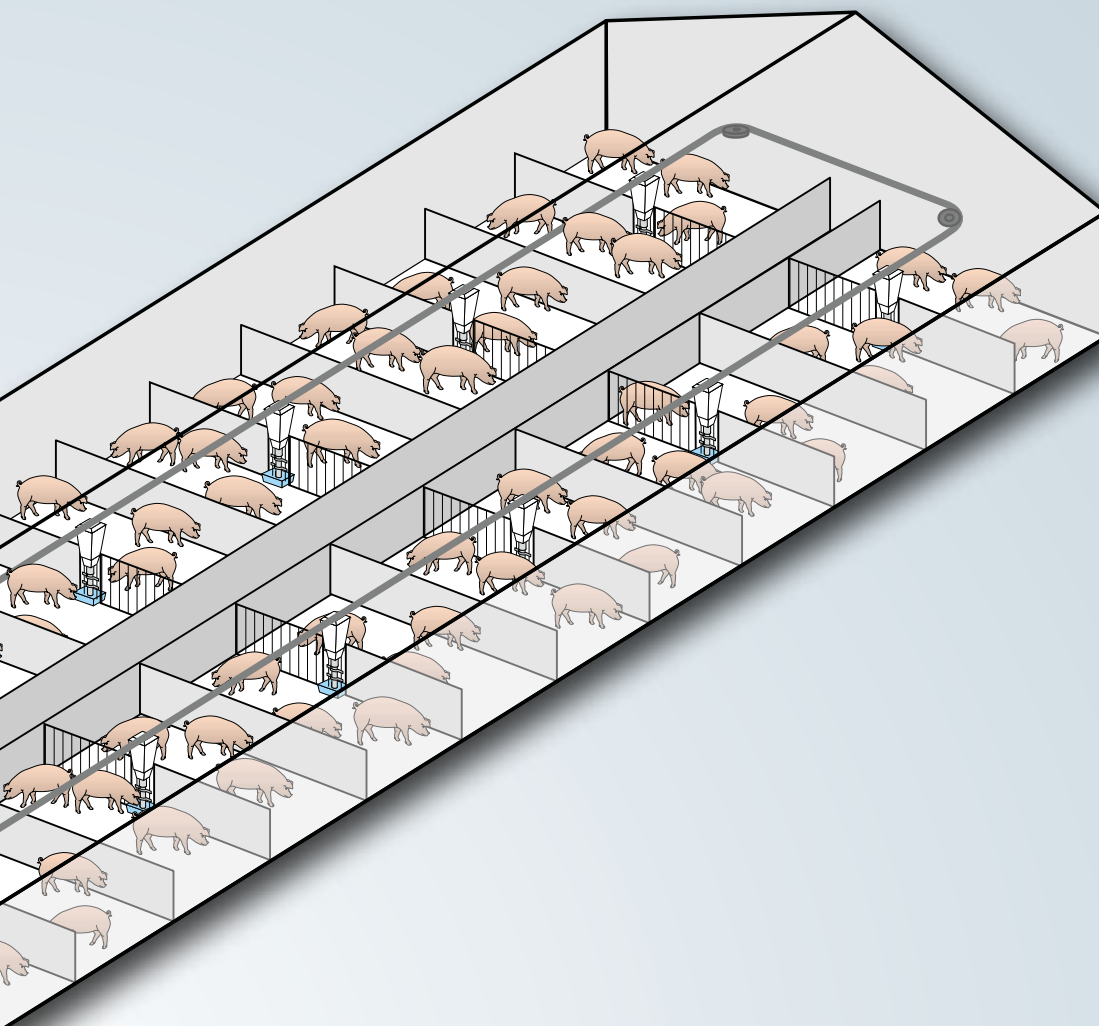
ProGrow[↑]



The end of manual weighing and historical data

This marks the end of making decisions on the basis of historical data. With ProGrow, you get real-time data, which shows the pigs' current gain, and you can take action at any time if your production deviates from the determined strategy.

Automatic camera weighing, monitoring of the animals' feed and water intake as well as activity and circadian rhythm ensure that you can optimise gain and feed consumption, thereby improving the economy in production.



Trouble-free weighing

Camera weighing is the optimal solution for weighing in traditional weaner and finisher units.

The camera is mounted into the ceiling and is thus protected from the natural curiosity of the pigs, just as it does not take up any room in the pen. The camera does not require any maintenance apart from normal cleaning.

Precise weighing

The ProGrow system has undergone over a year of testing in a Danish finisher herd. The test shows that camera weighing is precise right up to delivery at a weight of 110 kg.

SKOV A/S
Hedelund 4 • DK-7870 Roslev
T.: (+45) 7217 5555

SKOV Asia Ltd.
PB Tower • TH-10110 Bangkok
T.: (+66) 2 382 3031-2

www.skov.com

Dealer



Climate for Growth